

Specials

ArtDeck® FR

Type Specials based on Pressed Gratings type RR

At Staco, we understand the critical importance of fire safety, especially in the design and construction of layered or multiple level residential buildings. The Staco Deck Series, featuring the ArtDeck® FR and JettyDeck® FR, offer solid solutions that not only meet but exceed stringent fire safety standards. Recent fire tests conducted by Efectis Nederland have confirmed the exceptional fire performance of our Deck Series with EPDM FR fillings, making it an ideal choice for applications in floors and stairs.

Suitable for the following sectors



Floors

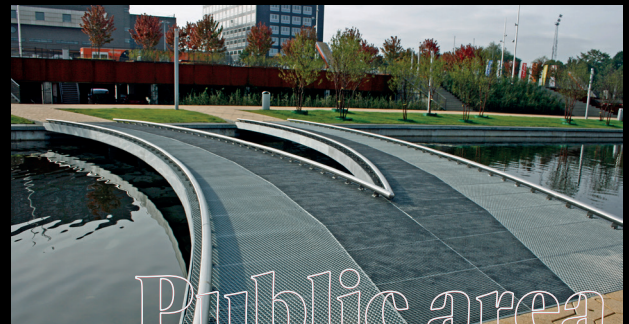


Stairs

Suitable for the following applications



Residential



Public area

ArtDeck® FR; unique elegant design with EPDM

Thanks to its weather-resistant and fire characteristics, ArtDeck® FR is perfectly suitable for many aesthetic applications, such as balcony flooring, platforms or bridge decks. The perfect combination of metal and EPDM.

Technical specifications

- » Material: Steel or Stainless steel
- » Thickness: 2 and 3 mm
- » Minimum filling height required 10 mm
- » Anti-slip class granulate: comparable with Rutschklass R13
- » PTV rating: 37 (Wet) / 74 (Dry) - (Acc. to BS7976-2:2002 + A1:2013 Pendulum Test)

Tested Fire Performance

The Deck Series panels were subjected to extensive testing by Efectis Nederland to determine their fire resistance, under EN 13501-1 classification standards. These tests were carried out for both floor and ceiling applications, ensuring a thorough understanding of the product's fire behavior in various settings.

Product Composition

The Deck Series panels consist of the following layers:

- Formed hot dip galvanized steel (S235), with drainage holes (mesh size 6-8 mm).
- Uniprim steel primer applied between the steel profile and the EPDM infill.
- Unifix-B-fl fire-retardant infill, consisting of 10-15 mm EPDM grains (size 1-4 mm) bound with a polyurethane binder.
- Borders of 3 mm flat steel strips, with standard plank widths up to 250 mm.

Classification Results

The tests resulted in the following classifications for the Deck Series:

1. Floor Applications

Classified as **Bfl-s1**

- o This classification indicates that the Deck Series flooring has a very limited contribution to fire (Class B) and produces minimal smoke (s1).
- o The panels demonstrated no lateral flame spread and no ignition of the filter paper during testing(2023-Efectis-R001038 St...)(2023-Efectis-R001040 St...).

2. Ceiling and Wall Applications

Classified as **Bs1-d0**

- o The panels exhibited low smoke production (s1) and no flaming droplets (d0), making them suitable for high-traffic areas such as staircases and corridors (2023-Efectis-R001038 St...)(2023-Efectis-R001041 St...).

Fire Test Highlights:

Single Burning Item Test (EN 13823)

The Deck Series panels were tested for their reaction to fire when exposed to a single burning item. During this test, the following results were observed:

- ✓ No lateral flame spread beyond 150 mm.
 - ✓ Heat release rates (FIGRA) were well within the limits for Class B materials(2023-Efectis-R001039 St...)
 - ✓ (ENL-23-000705_Plafond k...).
- Minimal smoke production, confirming the product's compliance with s1 classification (ENL-23-000705_Plafond k...).



Radiant Panel Flooring Test (EN ISO 9239-1)

The Deck Series also underwent the Radiant Panel Test to assess the critical heat flux and flame spread. The results confirmed the panels' suitability for flooring applications, with critical heat flux values exceeding 11 kW/m² and no significant flame spread (2023-Efectis-R001041 St...).



Flexibility in **Application:**

The versatile design of the Deck Series allows it to be used across multiple applications, including:

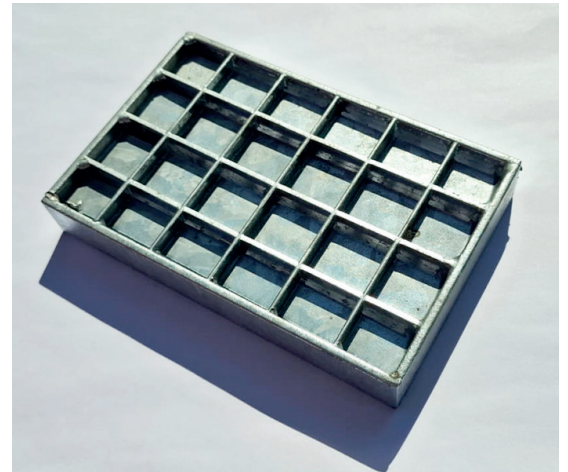
- o Flex Housing and renovation projects, where fire safety is paramount (2023-Efectis-R001038 St...)
(ENL-23-000705_Plafond k...).
- o High-traffic areas such as stairwells and corridors in multi-story residential buildings.

The product's fire-resistant performance across all its forms—ArtDeck® FR and JettyDeck® FR—ensures uniformity in fire protection without the need for separate testing for each variant.

Why choose **ArtDeck® FR?**

The Staco Deck Series offers a reliable and versatile solution for fire-resistant building designs. Tested to European standards, these panels provide peace of mind in both new builds and renovation projects, ensuring the safety of residents and the longevity of the construction.

For more details on the fire safety performance of our Deck Series, please check our website, where the full test report is published.



Certificates:



STACO

We are Staco,
We are metal.

www.staco.eu

Staco Nederland B.V.
St. Jozefweg 68
5953 JP Reuver
T +31 (0)77 474 29 29
E info@stacoroosters.nl

Staco Belgium N.V.
Frankrijkstraat 11, K3-4
9140 Temse
T +32 (0)3 711 36 23
E info@staco.be

Staco Deutschland GmbH
Raderbroich 9
41352 Korschenbroich
T +49 2161 62172 0
E info@staco.de

Staco Gratings UK Ltd
Suite 9 Ashford House
Beaufort Court
Sir Thomas Longley Road
Rochester, Kent
ME2 4FA
T +44 (0)1634 72 33 72
E info@stacogratings.co.uk

Staco France
(visiting address only)
ZI de la Gare
56460 Val d'Oust
T +33 (0)7 57 00 90 72
E info@staco.fr

Staco Polska Sp. z o.o.
ul. Fabryczna 8
32-005 Niepołomice
T +48 12 281 3505
E info@staco.pl